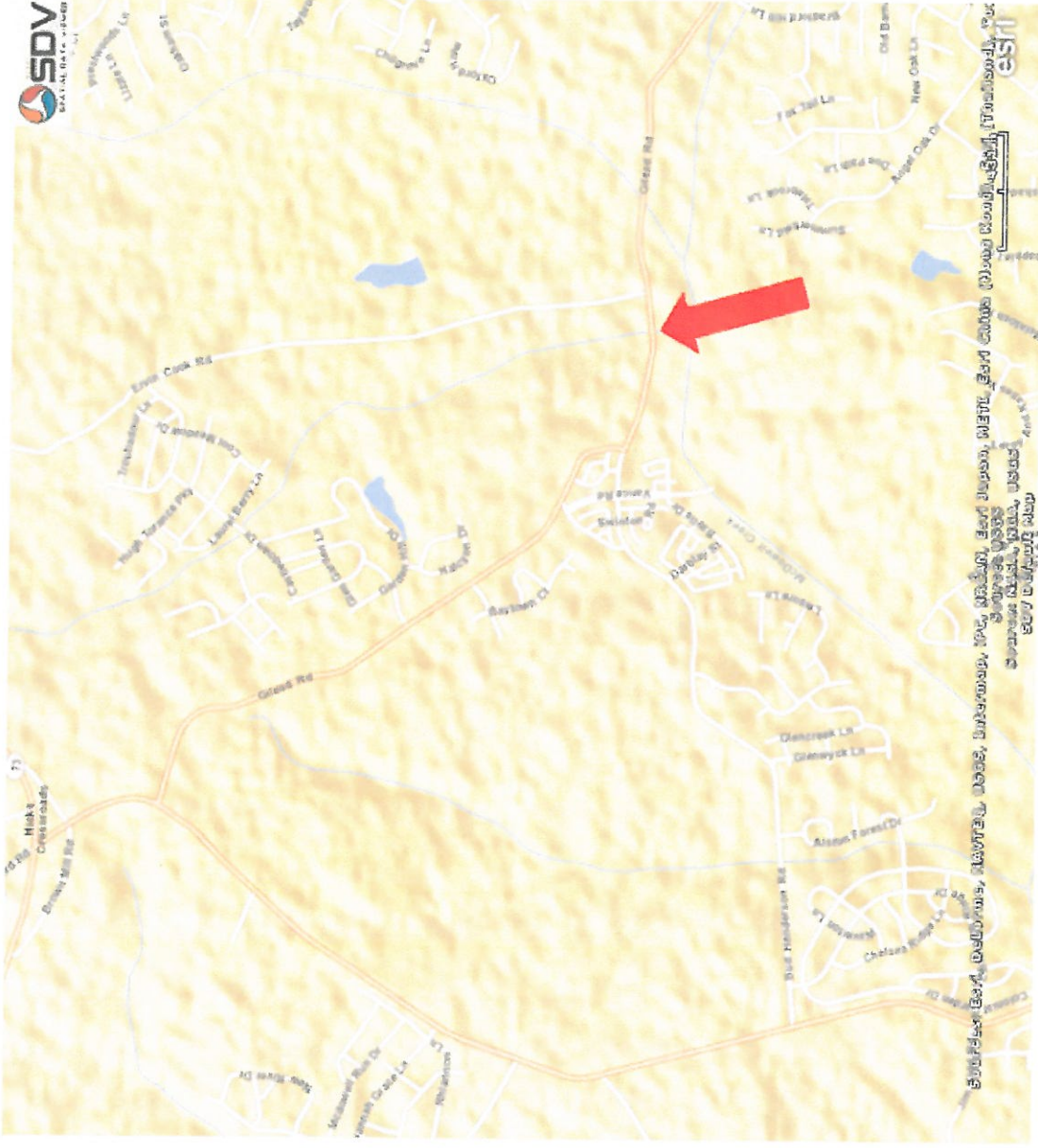
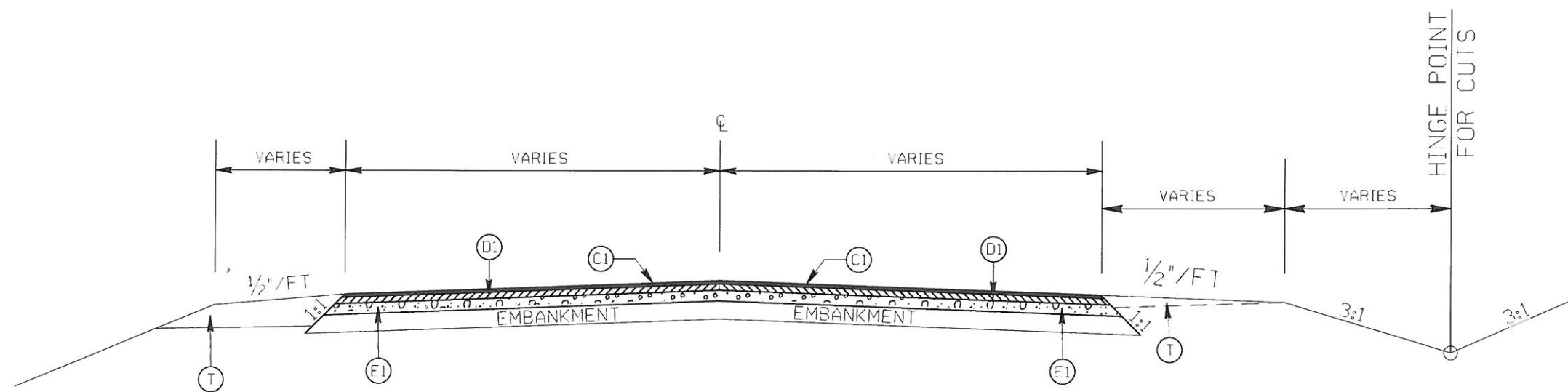


SR-2136 Gilead Rd



STATE	PROJECT NO.	SHEET NO.	TOTAL SHEETS
N.C.			
F.A. PROJECT NO.			



TYPICAL SECTION

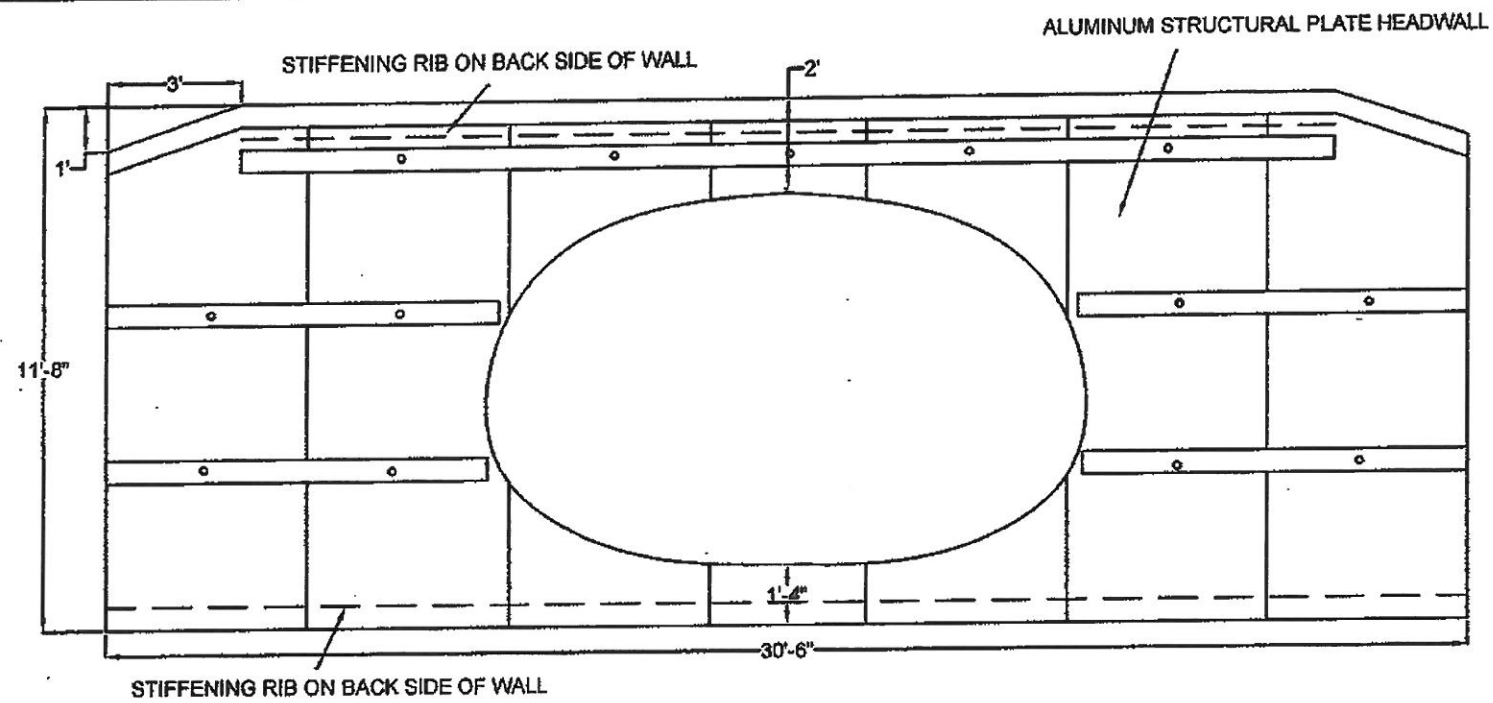
PAVEMENT SCHEDULE

(C1)	PROP. APPROX. 1 1/2" ASPHALT CONC. SURFACE COURSE, TYPE S9.5C, AT AN AVERAGE RATE OF 168 LBS. PER SQ. YD.
(D1)	PROP. APPROX. 2.5" ASPHALT CONC. BINDER COURSE, TYPE I19.0C, AT AN AVERAGE RATE OF 285 LBS. PER SQ. YD.
(E1)	PROP. APPROX. 4.0" ASPHALT CONC. BASE COURSE, TYPE B25.0C, AT AN AVERAGE RATE OF 456 LBS. PER SQ. YD.
(J)	PROP. 8" INCIDENTAL STONE.
(R1)	PROP. 2'-6" CURB & GUTTER
(R2)	PROP. 4" CONCRETE SIDEWALK
(T)	EARTH MATERIAL

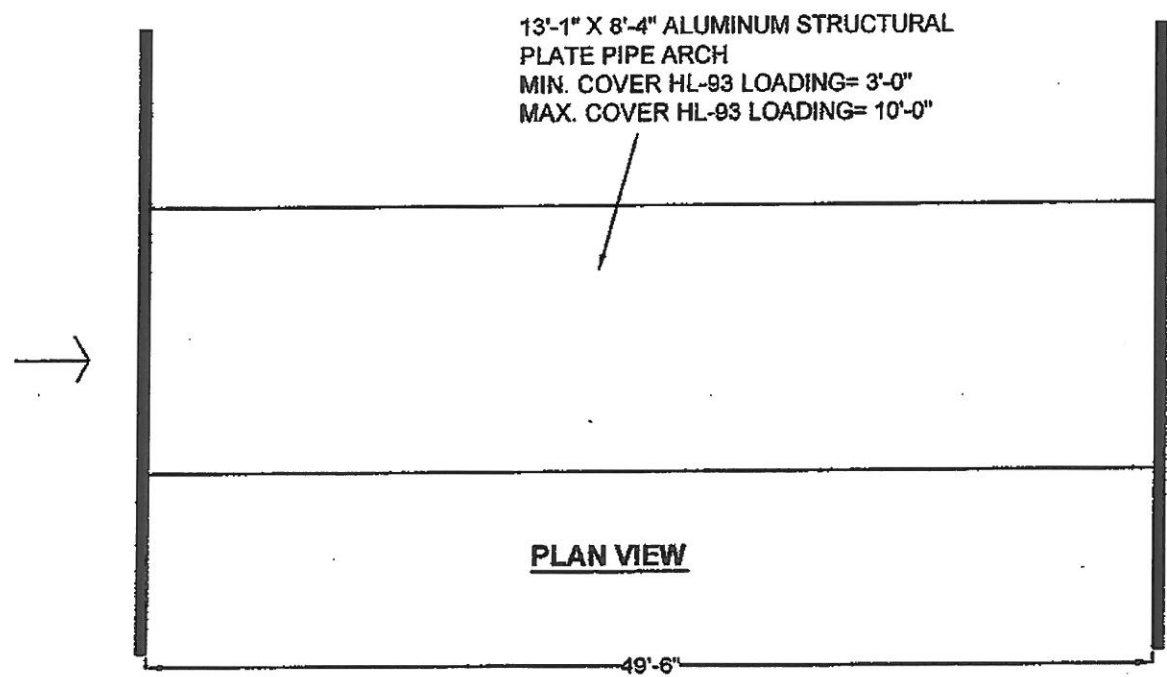
MECKLENBURG COUNTY
GILEAD RD. (SR-2136)

SCALE	1/4"		REVISIONS
DATE	7-13		
DWG. BY	JDH		
DESIGN BY	KB		
APPROVED	KB		


NOTE: CONTRACTOR IS TO MATCH EXISTING ROADWAY WIDTH



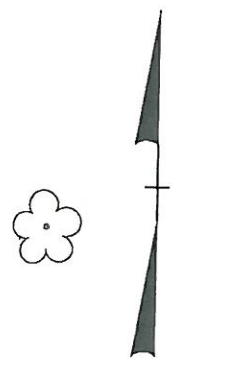
END VIEW- INLET & OUTLET



PLAN VIEW

DESCRIPTION	
ALUMINUM PIPE ARCH WITH HEADWALLS	
POMONA PIPE PRODUCTS	POMONA SUPPLY COMPANY
	
FIRM: POMONA PIPE PRODUCTS CHRIS BEATY 4811 DUNDAS DR. GREENSBORO, NC 27407 336-292-8080	
PROJECT: NCDOT DIV X GILEAD ROAD	
DATE: JULY 10, 2013	SHEET
NOT TO SCALE	

STATE	PROJECT NO.	SHEET NO.	TOTAL SHEETS
N.C.	10B.206011	1	1
F.A. PROJECT NO.			



NOTE
 COVER ALL EXPOSED EARTH AT THE END OF EACH DAY.
 USE SILT FENCE TO CONTAIN EXPOSED EARTH ON SLOPES WITHOUT COIR FIBER MATTING OR SEED & STRAW.

NOTES: STAGE ALL WORK SO THAT NC DOT BMP'S ARE ADHERED TO DURING REMOVAL OF EXISTING STRUCTURE AND INSTALLATION OF THE NEW STRUCTURE. USE EXTRA MEASURES TO ENSURE THAT ERODING SOILS ARE NOT AN ISSUE.

NOTES: REQUIRED THAT ALL WORK WITHIN THE STREAM BE COMPLETED "IN THE DRY".

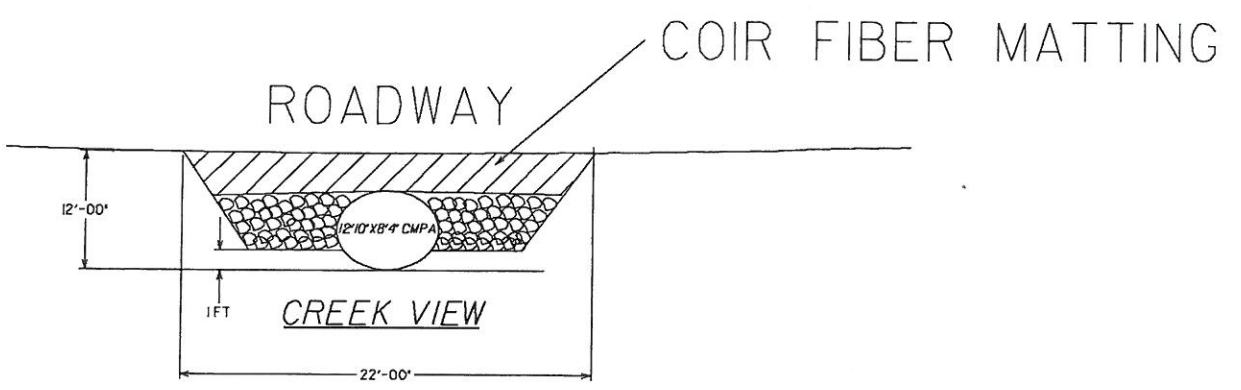
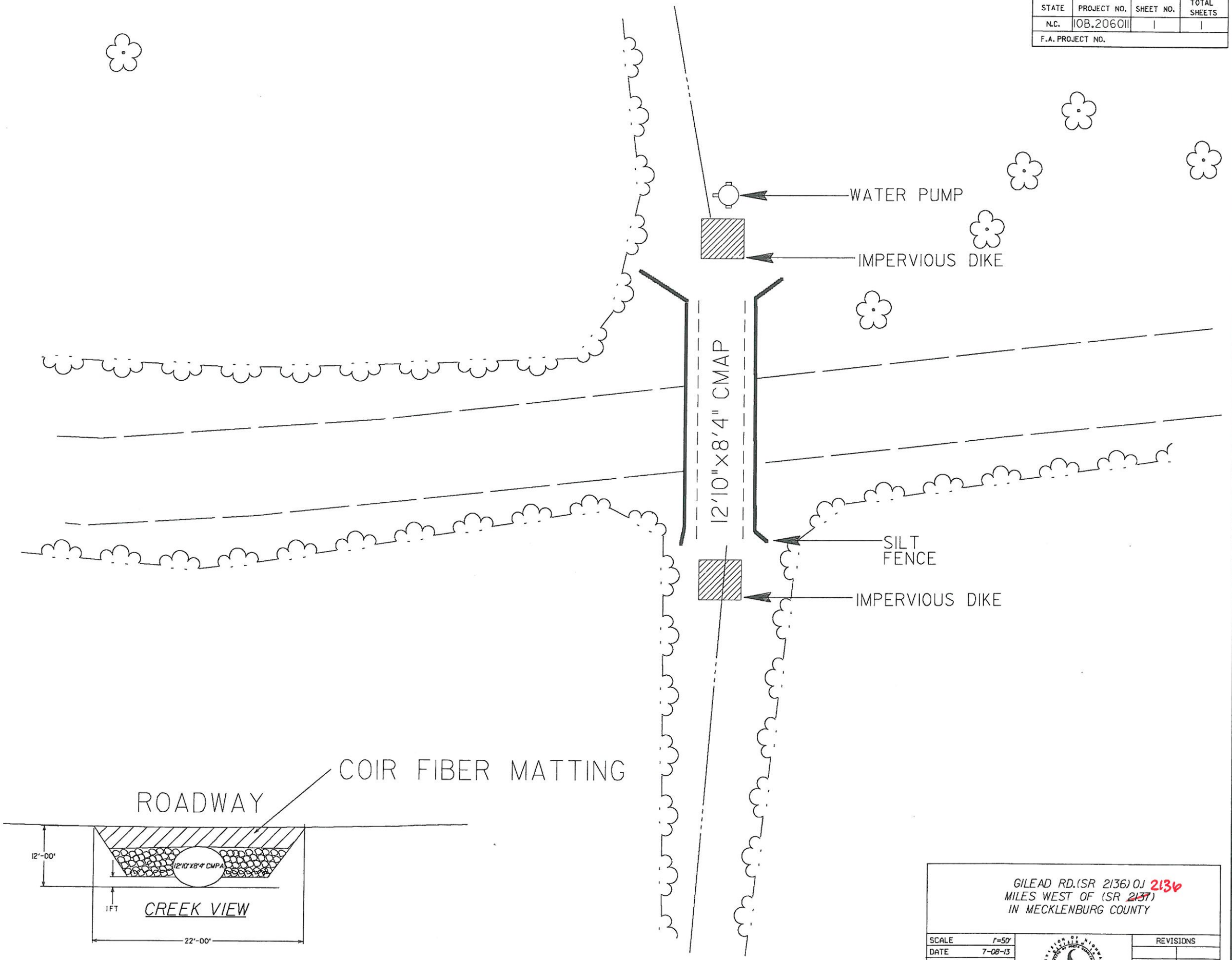
WATER SHALL BE PUMPED AROUND THE PROJECT SITE AND ALLOWED TO SHEET FLOW THROUGH VEGETATION OR BE FILTERED THROUGH AN APPROVED SILT BAG. GIVEN THE FACT THAT WATER WILL FLOW THROUGH THE PROJECT DURING EVENING HOURS, ANY EXPOSED DIRT SHOULD BE COVERED WITH FILTER FABRIC OR PLASTIC SHEETING PRIOR TO LEAVING THE PROJECT.

Impervious Dike:

The work covered by this section consists of furnishing, installing, maintaining, and removing an impervious dike for the purpose of diverting normal stream flow around the construction site. The Supervisor shall construct an impervious dike in such a manner approved by the Engineer. The impervious dike shall not permit seepage of water into the construction site or contribute to siltation of the stream. The impervious dike shall be constructed of an acceptable material in the locations noted on the plans or as directed by the Engineer.

Acceptable materials shall include but not be limited to sheet piles, sandbags, and/or the placement of an acceptable size stone lined with polypropylene or other impervious fabric.

Earth material shall not be used to construct an impervious dike when it is in direct contact with the stream unless vegetation can be established before contact with the stream takes place.



GILEAD RD. (SR 2136) 0J 2136
 MILES WEST OF (SR 2137)
 IN MECKLENBURG COUNTY

SCALE	1"=50'		REVISIONS
DATE	7-08-13		
DWG. BY	MJC		
DESIGN BY	MJC		
APPROVED	N/A		